



# DOMINO lentynos

DOMINO furniture

DOMINO мебель

---

## SURINKIMO INSTRUKCIJA / ASSEMBLY INSTRUCTION / ИНСТРУКЦИЯ ПО МОНТАЖУ

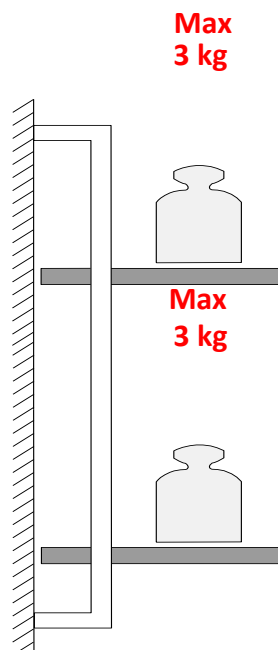
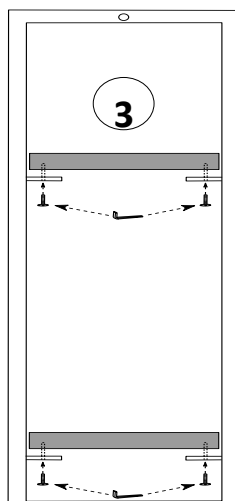
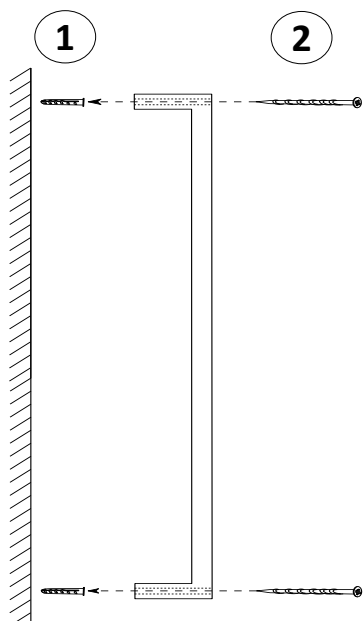
### Surinkimas:

1. Išgręžkite skylę sienoje ir įkalkite nailoninį kaištį (**komplektacijoje įdėtas nailoninis kaištis skirtas betoninėms sienoms**);
2. Prisukite metalinį rėmą prie sienos;
3. Prisukite varžtais lentyną prie metalinio rėmo;

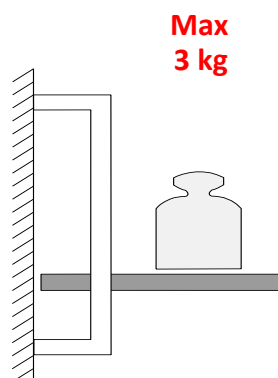
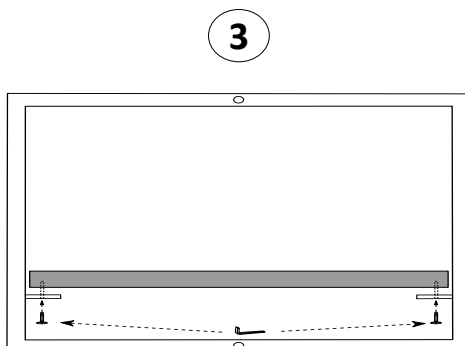
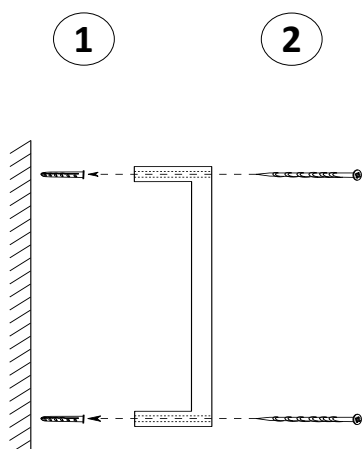
### Assembly:

1. Drill a hole in the wall and put in nylon plug (**Nylon plug is for cement, brick, stone and concrete walls**);
2. Screw the metal frame to the wall;
3. Screw shelf to the metal frame;

## Domino lentyna 300x700



## Domino lentyna 300x500



## Domino lentyna 300x200

